

# Little Pete Slim Mouse Trap #423 & #423CL

## 'Little Pete' Slim Multiple Live Catch Traps

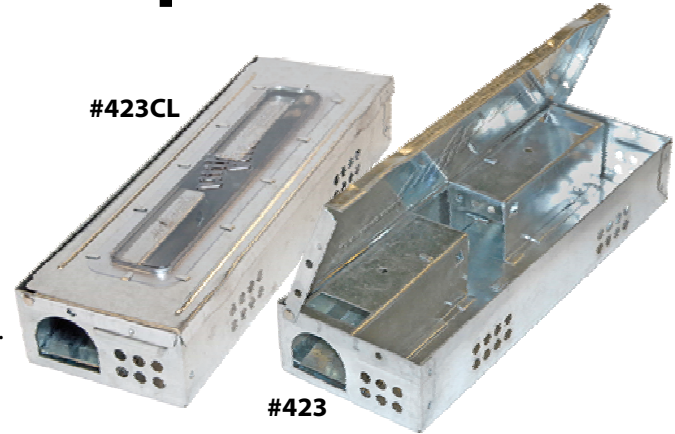
- > #423 has solid top. #423CL has a clear inspection window.
- > Either model can hold up to 9 mice at a time.
- > No bait required. Traps compatible with #JT166 Glue Boards.
- > Low-profile. Fits under furniture, equipment, pallets, etc.
- > 55% narrower than other traps - fits in tight spots.

## Trap Instructions

For best results, place the trap lengthwise against a wall/object. Make sure the entrance holes are closest to the wall or object.

Locate the trap in locations that will remain dry. If that is not possible, elevate the trap up to 2" from floor level to keep it out of standing water. You can fix the trap in a location using ties, cables or other hardware appropriate for the location.

Baiting is not necessary. A small piece of cotton with a scent attractant (like artificial vanilla or almond extract) placed inside the trap can enhance effectiveness.



## Little Pete Dimensions

Height - 1-3/4"

Length - 10-1/4"

Width - 3-9/16"



**Nixalite® of America Inc**

1025 16th Ave, E. Moline, IL 61244

Experts in Bird & Animal Control Since 1950

P800.624.1189 F309-755-0077

[birdcontrol@nixalite.com](mailto:birdcontrol@nixalite.com)

[www.nixalite.com](http://www.nixalite.com)