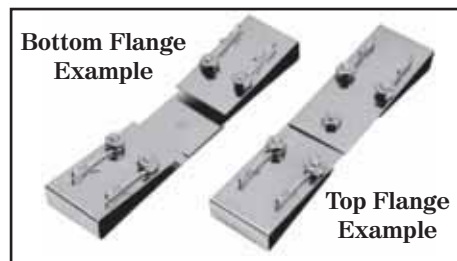


# Nixalite® I-Beam Clamp Worksheet DS

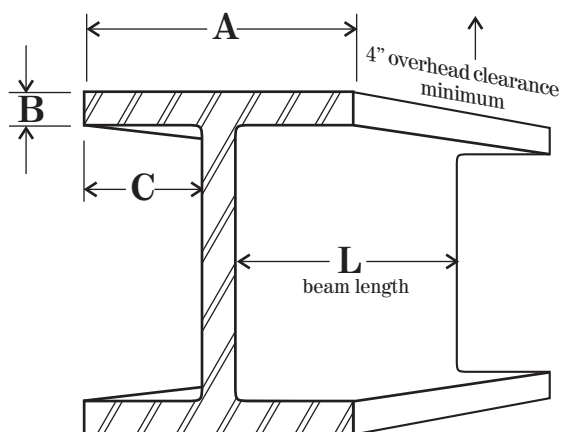
Before Nixalite can price I-Beam clamps, we must have accurate dimensions for each I-Beam. **It is critical that the dimensions you provide are accurate!!** We make I-beam clamps to fit the flange dimensions you provide, making them non-returnable and non-refundable items.

Complete the **Top Flange** or **Bottom Flange** sections below. If you need to protect both top **and** bottom flanges then complete both sections. Please provide the **length of each flange run**.



**NOTE:** Nixalite of America Inc determines the proper mounting hardware locations for all custom made forms. We will not manufacture any form, clamp or strap that would result in improper product spacing or quantities. I-Beam clamps can fasten either the **Nixalite Premium Barrier Models** or the **E-Spike Economy Spikes**. As they are different sizes, your choice will change the clamp design. Please choose the type of control to be installed on each surface.

## Top Flange Clamps



A - flange width \_\_\_\_\_

B - flange thickness \_\_\_\_\_

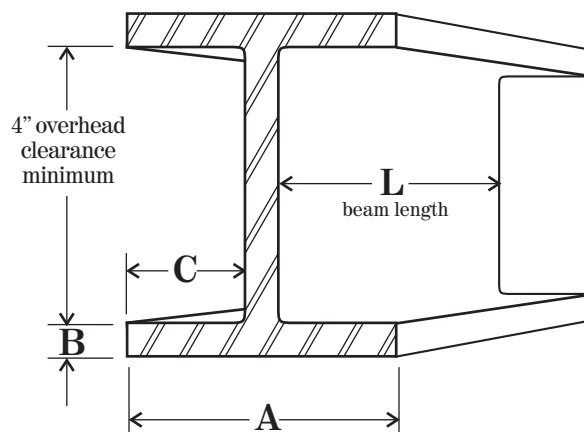
C - flange depth \_\_\_\_\_

L - beam length(s) \_\_\_\_\_

What type of control (choose one)

- Nixalite Premium Bird Barriers
- E-Spike Economy Bird Spikes

## Bottom Flange Clamps



A - flange width \_\_\_\_\_

B - flange thickness \_\_\_\_\_

C - flange depth \_\_\_\_\_

L - beam length(s) \_\_\_\_\_

What type of control (choose one)

- Nixalite Premium Bird Barriers
- E-Spike Economy Bird Spikes

- continued on back -

**For more information, visit our website at [www.nixalite.com](http://www.nixalite.com)  
or contact Nixalite® at 800.624.1189 or fax 800.624.1196**

## Top Flange Clamps

A - flange width \_\_\_\_\_

B - flange thickness \_\_\_\_\_

C - flange depth \_\_\_\_\_

L - beam length(s) \_\_\_\_\_

What type of control (choose one)

Nixalite Premium Bird Barriers

E-Spike Economy Bird Spikes

## Bottom Flange Clamps

A - flange width \_\_\_\_\_

B - flange thickness \_\_\_\_\_

C - flange depth \_\_\_\_\_

L - beam length(s) \_\_\_\_\_

What type of control (choose one)

Nixalite Premium Bird Barriers

E-Spike Economy Bird Spikes

next beam size next beam size next beam size

A - flange width \_\_\_\_\_

B - flange thickness \_\_\_\_\_

C - flange depth \_\_\_\_\_

L - beam length(s) \_\_\_\_\_

What type of control (choose one)

Nixalite Premium Bird Barriers

E-Spike Economy Bird Spikes

A - flange width \_\_\_\_\_

B - flange thickness \_\_\_\_\_

C - flange depth \_\_\_\_\_

L - beam length(s) \_\_\_\_\_

What type of control (choose one)

Nixalite Premium Bird Barriers

E-Spike Economy Bird Spikes

observations & notes

\_\_\_\_\_

\_\_\_\_\_

\_\_\_\_\_

\_\_\_\_\_

\_\_\_\_\_

**It is critical that the dimensions you provide are accurate!!**

Custom made forms are non-returnable and non-refundable items. If you have any questions about this or any of the other special form worksheets, please contact Nixalite immediately.



**Nixalite<sup>®</sup> of America Inc.**  
1025 16th Avenue East Moline, IL. 61244  
Experts In Architectural Bird Control Since 1950

Phone: 800.624.1189 or 309.755.8771

Fax: 800.624.1196 or 309.755.0077

Email: [birdcontrol@nixalite.com](mailto:birdcontrol@nixalite.com)

Web: [www.nixalite.com](http://www.nixalite.com)



*Where the World Shops for Humane Bird and Animal Control.*